



Unit 2 - How Often?

look

win

laugh

stand

begin

walk



Choose and Describe

Conductor chooses an item and picks different students to speak.



How often?

Vocab & Key Phrase Integration



I _____ twice a day.



I _____ three times a week.



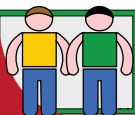
I _____ ten times a month.



Key Expressions

A: How often do you laugh?

B: I laugh four times a day.



Pair
Q and A

Make student partner pairs to exchange a Q & A set. 1st student gives the prompt. 2nd student gives the response. Go to next partner pair.



How often?

Repetition and Recognition



TEACHER DIRECTED
Teacher leads the class and students follow.

TEACHER SUPPORTED
Students conduct with close teacher support and supervision.

STUDENT DIRECTED
Students lead the classroom activities and manage classroom performance. Teacher evaluates.

A: Match



win



laugh



look

walk



begin



stand



B: Answer the questions

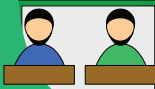
How often do you walk to school?

_____.



How often do you win a game?

_____.



Simple Pair-Work

Students work in pairs to complete the worksheet.



TEACHER'S CHOICE

TEACHER DIRECTED

Teacher leads the class and students follow.

TEACHER SUPPORTED

Students conduct with close teacher support and supervision.

STUDENT DIRECTED

Students lead the classroom activities and manage classroom performance. Teacher evaluates.

A. Read and number the pictures.

How often do you _____?

1. I laugh with my friends every day.
2. I win a game once a week.
3. I look at insects three times a week.
4. I stand during class twice a day.
5. I walk to school five times a week.
6. I begin a new book once a week.













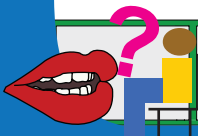
B. Read and Check.

How often do you play the piano?



I play the piano three times a week.

I piano play the two months a time.



Interview

Students interview each other in front of the class.



TEACHER'S CHOICE

TEACHER DIRECTED

Teacher leads the class and students follow.

TEACHER SUPPORTED

Students conduct with close teacher support and supervision.

STUDENT DIRECTED

Students lead the classroom activities and manage classroom performance. Teacher evaluates.

Read the story and answer the questions:

Manu and his friends are at a soccer game. Manu sees a new student. She is sitting next to Klara. Stig says that her name is Meg. She has long brown hair and she is wearing glasses.

Manu wants to talk to her. He goes to the new student and he sits down next to her.

She likes to play soccer. She plays soccer once a week.



1. Where is Manu?

2. What does Manu want to do?

3. How often does Meg play soccer?

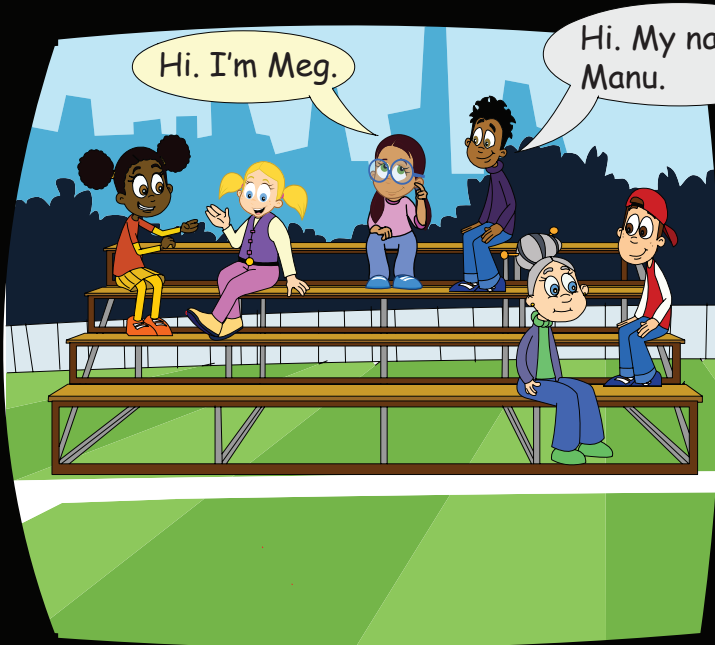


Town Hall Meeting

Call on volunteers or assign students to read and answer.



How often? Communicative Activation



A: Do you play soccer?

A: How often do you play?

B: Yes, I do.

B: I play once a week.

