

Unit 6 - What To Do?



go swimming



go hiking



go skiing



go skating



go boating



go sledding



Choose and Describe

Conductor chooses an item and picks different students to speak.



What to do?

Vocab & Key Phrase Integration



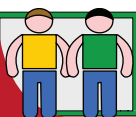
I would like to _____.



Key Expressions

A: What would you like to do on the weekend?

B: I would like to go boating.



Pair
Q and A

Make student partner pairs to exchange a Q & A set. 1st student gives the prompt. 2nd student gives the response. Go to next partner pair.



What to do?

Repetition and Recognition



TEACHER DIRECTED
Teacher leads the class and students follow.

TEACHER SUPPORTED
Students conduct with close teacher support and supervision.

STUDENT DIRECTED
Students lead the classroom activities and manage classroom performance. Teacher evaluates.

A: Match



go skiing

go hiking

go swimming

go skating

go sledding

go boating

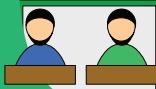


B: What would you like to do on the weekend?

I would _____ to go _____.



I _____ like to go _____.



Simple Pair-Work

Students work in pairs to complete the worksheet.



TEACHER DIRECTED

Teacher leads the class and students follow.

TEACHER SUPPORTED

Students conduct with close teacher support and supervision.

STUDENT DIRECTED

Students lead the classroom activities and manage classroom performance. Teacher evaluates.

A. Read and number the correct box.

What would you like to do on the weekend?

1. I would like to go to the ice rink.
2. I would like to go to the beach.
3. I would like to slide down the hill.
4. I would like to walk up the mountain.
5. I would like to paddle down the river.
6. I would like to go fast down the mountain.





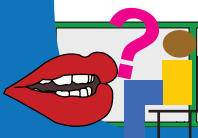








B. What would you like to do on the weekend?



Interview

Students interview each other in front of the class.



TEACHER'S CHOICE

TEACHER DIRECTED

Teacher leads the class and students follow.

TEACHER SUPPORTED

Students conduct with close teacher support and supervision.

STUDENT DIRECTED

Students lead the classroom activities and manage classroom performance. Teacher evaluates.

Read the story and answer the questions:

Manu and Meg are going to get some food. It is lunch time and the soccer players are taking a break. They are walking to the snack shop.

They are talking about the weekend. Meg asks Manu if he has any plans. Manu says that he doesn't have any. There are many things to do on the weekend.

They can go hiking, swimming or skating. Meg wants to go skating.



1. What are Meg and Manu doing?

2. Does Manu have plans for the weekend?

3. What would Meg like to do?



Town Hall Meeting

Call on volunteers or assign students to read and answer.



What to do?

Communicative Activation

Meg and Manu are going to the snack shop.



A: What are you doing on the weekend?

B: Nothing.

B: What would you like to do?

A: I would like to go skating.

