

Unit 8 - One Plus One



minus



plus



equals

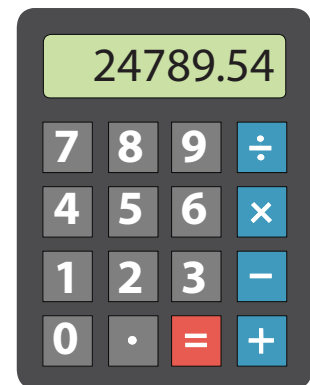
add



subtract



calculate



Choose and Describe

Conductor chooses an item and picks different students to speak.



Calculate twenty-five plus four.

Add four to twenty-five.

$$25 + 4 = 29$$

Twenty-five plus four equals twenty-nine.

Four added to twenty-five equals twenty-nine.

Calculate twenty-five minus four.

Subtract four from twenty-five.

$$25 - 4 = 21$$

Twenty-five minus four equals twenty-one.

Four subtracted from twenty-five equals twenty-one.

Key Expressions

A: How much is twenty plus forty?

B: Twenty plus forty is sixty. $20 + 40 = 60$

A: How much is twenty added to forty?

B: Twenty added to forty is sixty.



Pair
Q and A

Make student partner pairs to exchange a Q & A set. 1st student gives the prompt. 2nd student gives the response. Go to next partner pair.



One Plus One

Repetition and Recognition



TEACHER'S CHOICE

TEACHER DIRECTED

Teacher leads the class and students follow.

TEACHER SUPPORTED

Students conduct with close teacher support and supervision.

STUDENT DIRECTED

Students lead the classroom activities and manage classroom performance. Teacher evaluates.

A. Write out the equations.

$17+11=$ Seventeen plus eleven equals twenty-eight.

$22-7=$ _____

$13+12=$ _____

$27-6=$ _____

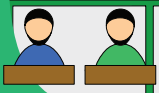
B. Fill in the blanks with the correct words.

plus minus equals

Twenty-nine _____ seven _____ thirty six.

Twenty-five _____ six _____ nineteen.

Fifty-two _____ nine _____ sixty-one.



Simple
Pair-Work

Students work in pairs to complete the worksheet.



TEACHER DIRECTED

Teacher leads the class and students follow.

TEACHER SUPPORTED

Students conduct with close teacher support and supervision.

STUDENT DIRECTED

Students lead the classroom activities and manage classroom performance. Teacher evaluates.

A. Number the correct answers.

1. How much is twenty-one plus four?
2. How much is seventeen minus six?
3. How much is fifteen added to nine?
4. How much is eleven subtracted from nineteen?
5. How much is twenty-two plus twelve?
6. How much is thirty-nine minus eight?

11

24

31

8

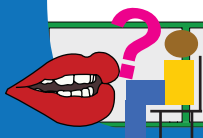
25

34

B. Read and check.

29 fifteen added to fourteen
 thirteen plus fourteen

36 forty-eight minus twelve
 eleven deducted from fifty-four



Interview

Students interview each other in front of the class.



TEACHER DIRECTED

Teacher leads the class and students follow.

TEACHER SUPPORTED

Students conduct with close teacher support and supervision.

STUDENT DIRECTED

Students lead the classroom activities and manage classroom performance. Teacher evaluates.

Read the story and answer the questions:

Meg and Manu are at the snack shop. They are talking about food. They are talking about what they want.

Manu wants to calculate how much a coke and hamburger is. A hamburger is \$3.50 and a coke is \$1.50. He has to add \$3.50 to \$1.50. That is \$5.00 all together.

Manu has \$7.00 and a coke and hamburger is \$5.00 in total. Manu can buy it.

$$13 + 12$$

1. What are Meg and Manu doing?

2. What does Manu want to calculate?

3. Does Manu have money to buy it?



Town Hall
Meeting

Call on volunteers or assign students to read and answer.



One Plus One Communicative Activation



A: How much is a coke and a hamburger together?

B: How much is \$3.50 plus \$1.50?

A: That is \$5.00.

B: Great! You have \$7.00!

