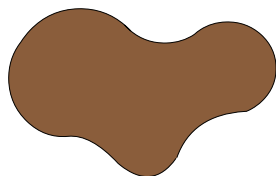


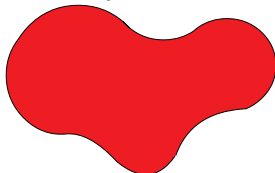


Unit 5 - What Color Is It?

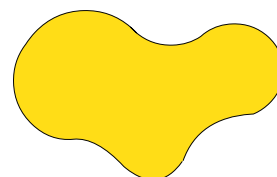
brown



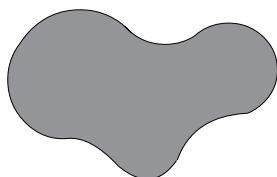
red



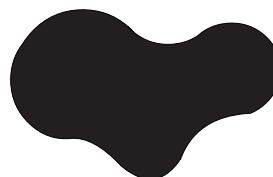
yellow



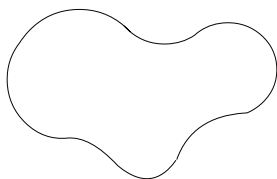
gray



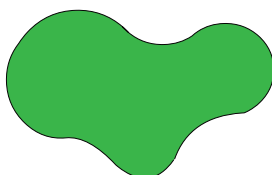
black



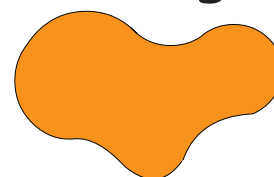
white



green

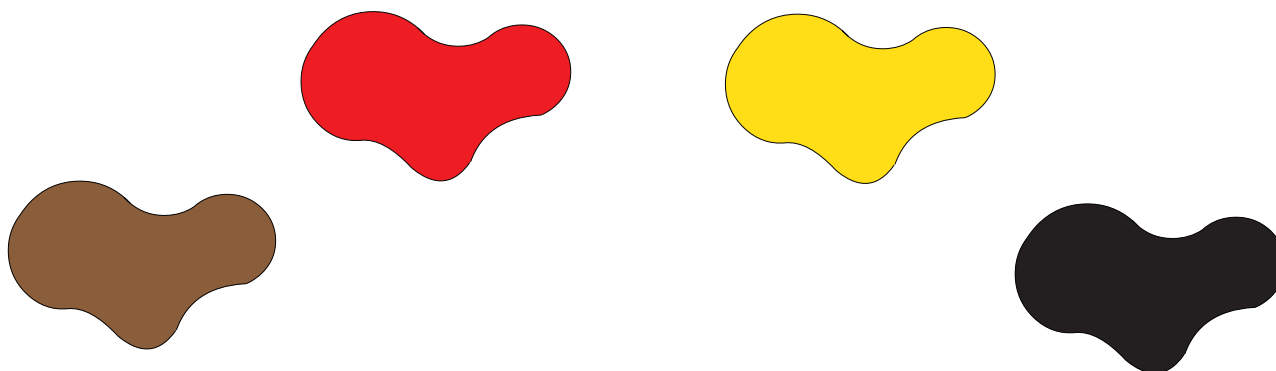


orange

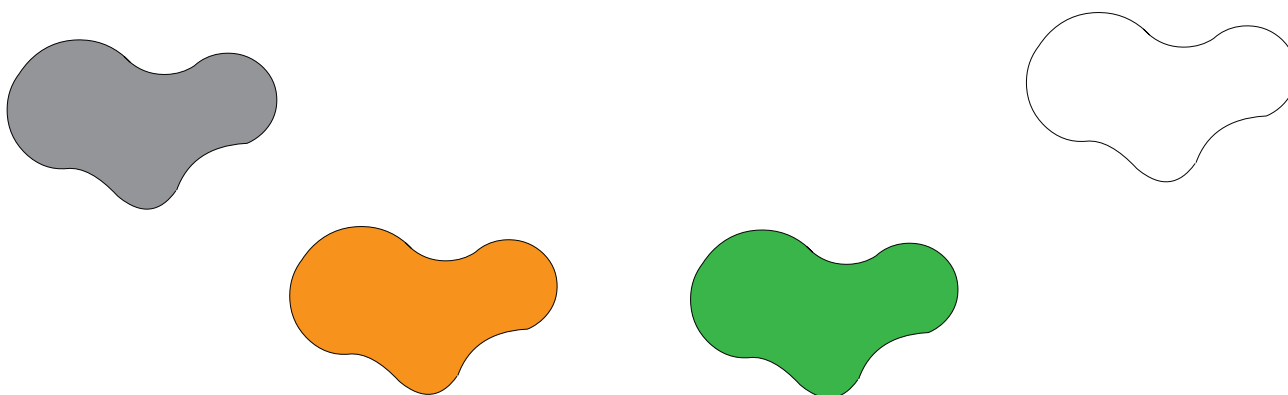


Chain

Conductor shows a picture to student 1. Student 1 answers and shows the next picture to student 2. Student 2 answers and shows the next picture to student 3. Go around the class.



The spider is black.



Key Expressions



A: What color is the goat?

B: The goat is white.



Pair
Q and A

Make student partner pairs to exchange a Q & A set. 1st student gives the prompt. 2nd student gives the response. Go to next partner pair



What Color Is It?

Repetition and Recognition



TEACHER DIRECTED

Teacher leads the class and students follow.

TEACHER SUPPORTED

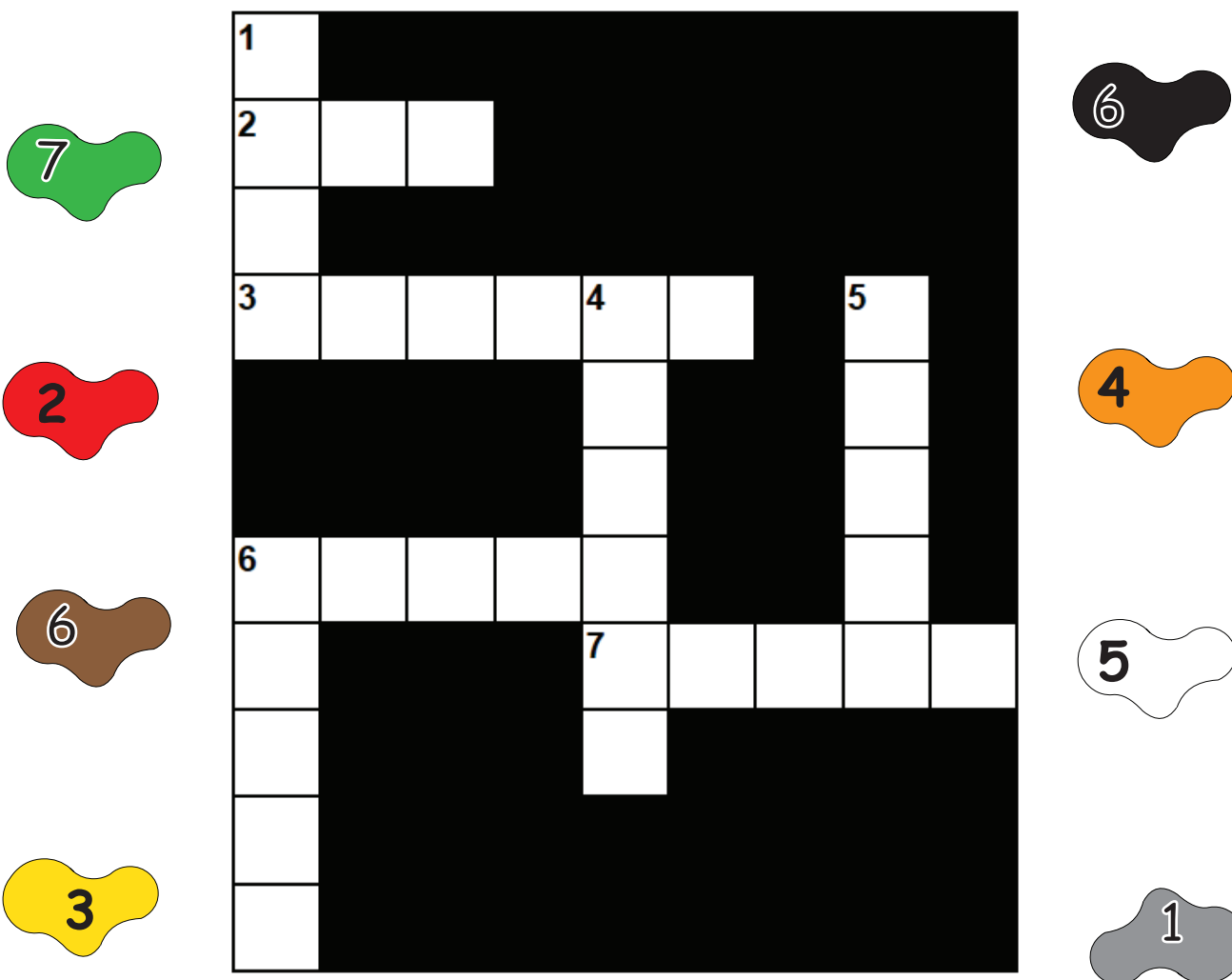
Students conduct with close teacher support and supervision.

STUDENT DIRECTED

Students lead the classroom activities and manage classroom performance. Teacher evaluates.

Across →

Down ↓



Slap
It

Students form two teams in a race to slap the item first.



What Color Is It?

Concept Integration



TEACHER DIRECTED

Teacher leads the class and students follow.

TEACHER SUPPORTED

Students conduct with close teacher support and supervision.

STUDENT DIRECTED

Students lead the classroom activities and manage classroom performance. Teacher evaluates.



Bruno's shoes are _____.

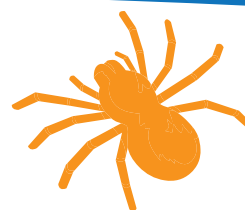


Mamie's hair is _____.



Emma's shirt is _____.

1. The spider is black.
orange. ☐
☐



2. The apple is red.
green. ☐
☐



3. The ball is black.
brown. ☐
☐



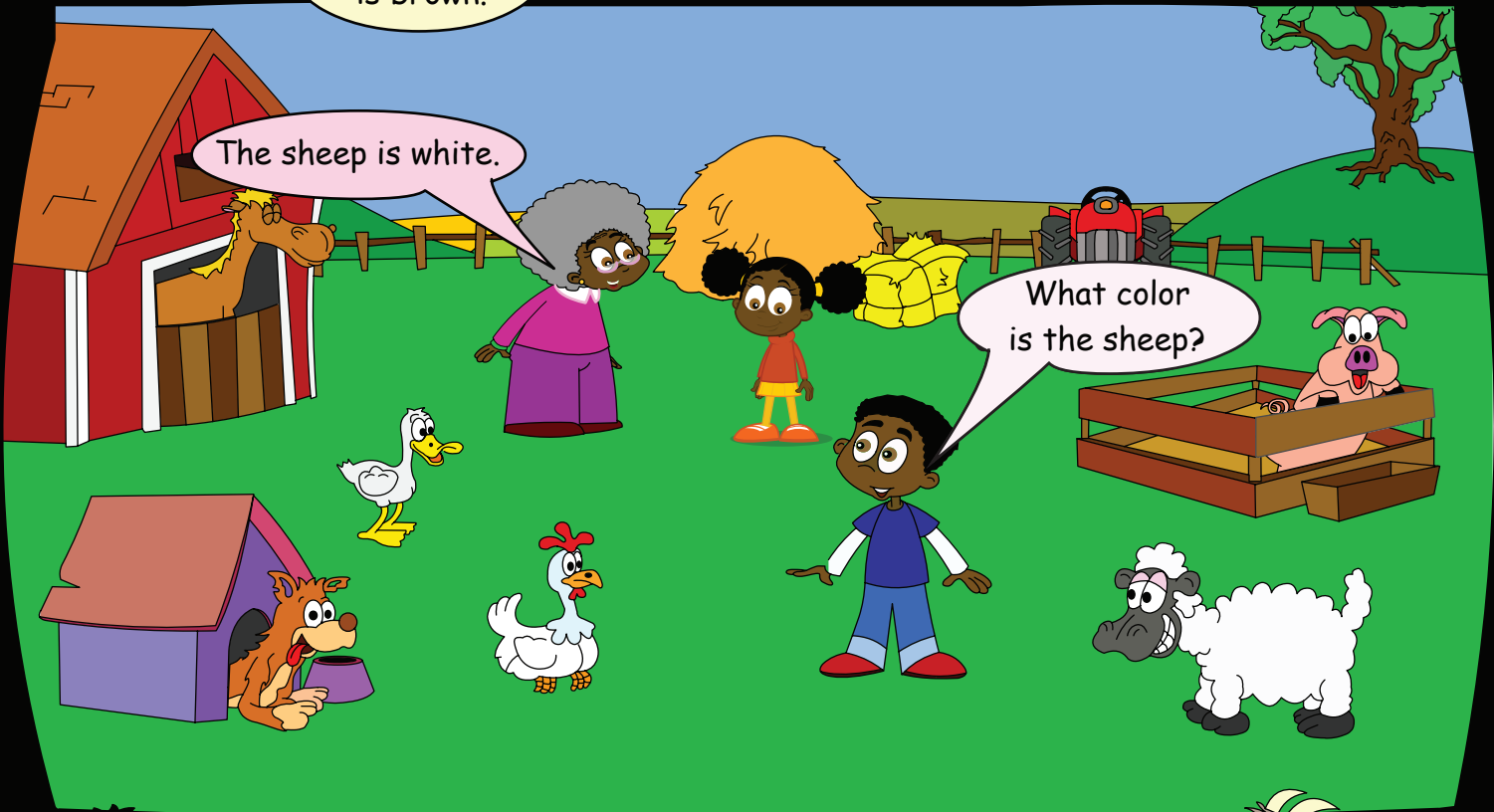
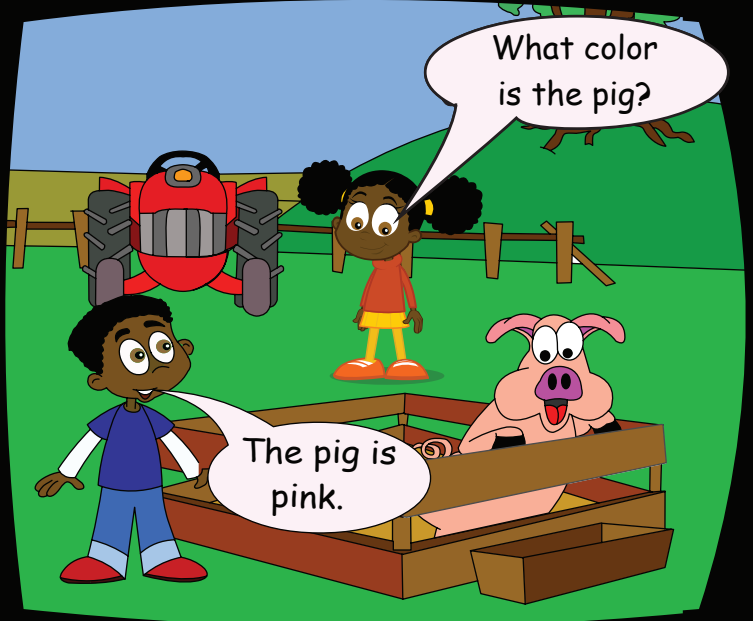
Simple
Pair-Work

Students work in pairs to complete the worksheet.



What Color Is It?

Communicative Activation



A: What color is the goat?

B: The goat is white.

A: What color is the pig?

B: The pig is pink.

